



For Sale

500 Cataraqui Woods Dr. Kingston, ON

Martin L. Skolnick, Vice President/Broker

+1 613 541-9865

martin.skolnick@rockwellcre.com

Scott Botting, Broker

+1 613 888-8664

scott.botting@rockwellcre.com

**Rockwell Commercial
Real Estate, Brokerage**



78 Brock St. Kingston, ON K7L 1R9

www.rockwellcre.com

Key Highlights

The Offering

Presenting an unparalleled chance to acquire a prime parcel of zoned development land in Kingston's fast-growing west end, this property includes recent zoning approvals in place permitting a density of up to 280 units per net hectare, up to 6 stories of residential, and allowing for commercial space on the ground floor. Its strategic location, coupled with high demand for rental apartments, positions this property as an ideal canvas for visionary developers. With ± 5.344 acres of well-configured land on a prominent corner, this opportunity offers limitless potential to create a landmark destination that caters to the evolving needs of the community. For qualified buyers, a comprehensive package of due diligence documentation is available, ensuring a transparent and efficient transaction process.

Poised For Growth

Seeing a 7.1% population increase in 2021 from 2016, Kingston is growing rapidly with an overall population of 132,485 residents, making the municipality the largest centre between the GTA, Ottawa and Montreal. The CMA totals a population of approximately 172,546. The City of Kingston recently approved a population growth report projecting the city could see the population rise by 32% by the year 2051.

Kingston's economy is driven by the private sector, all levels of government, startups and global corporations and continues to attract significant and diverse economic investment, providing a competitive landscape for multinational companies and entrepreneurs alike. In 2022, the city was ranked number one in Canada for both direct foreign investment and its small city startup ecosystem. Well-established industry clusters fuel the region; namely, clean technology, a globally recognized health and sciences industry and robust research and development sector. Queen's University, the Royal Military College, and St. Lawrence College provide Kingston's economy with world-class education, research and Canada's most educated workforce with two-thirds of the city's population being post-secondary graduates.

In 2023 Umicore Rechargeable Battery Materials Inc., with investment from the Canadian government, broke ground on a new world-class \$2.76 Billion dollar project in nearby Loyalist Township which is expected to result in over 600 new and well paid jobs, plus indirectly bolster supporting business and industry, which will add to the already strong rental market.



Site Details

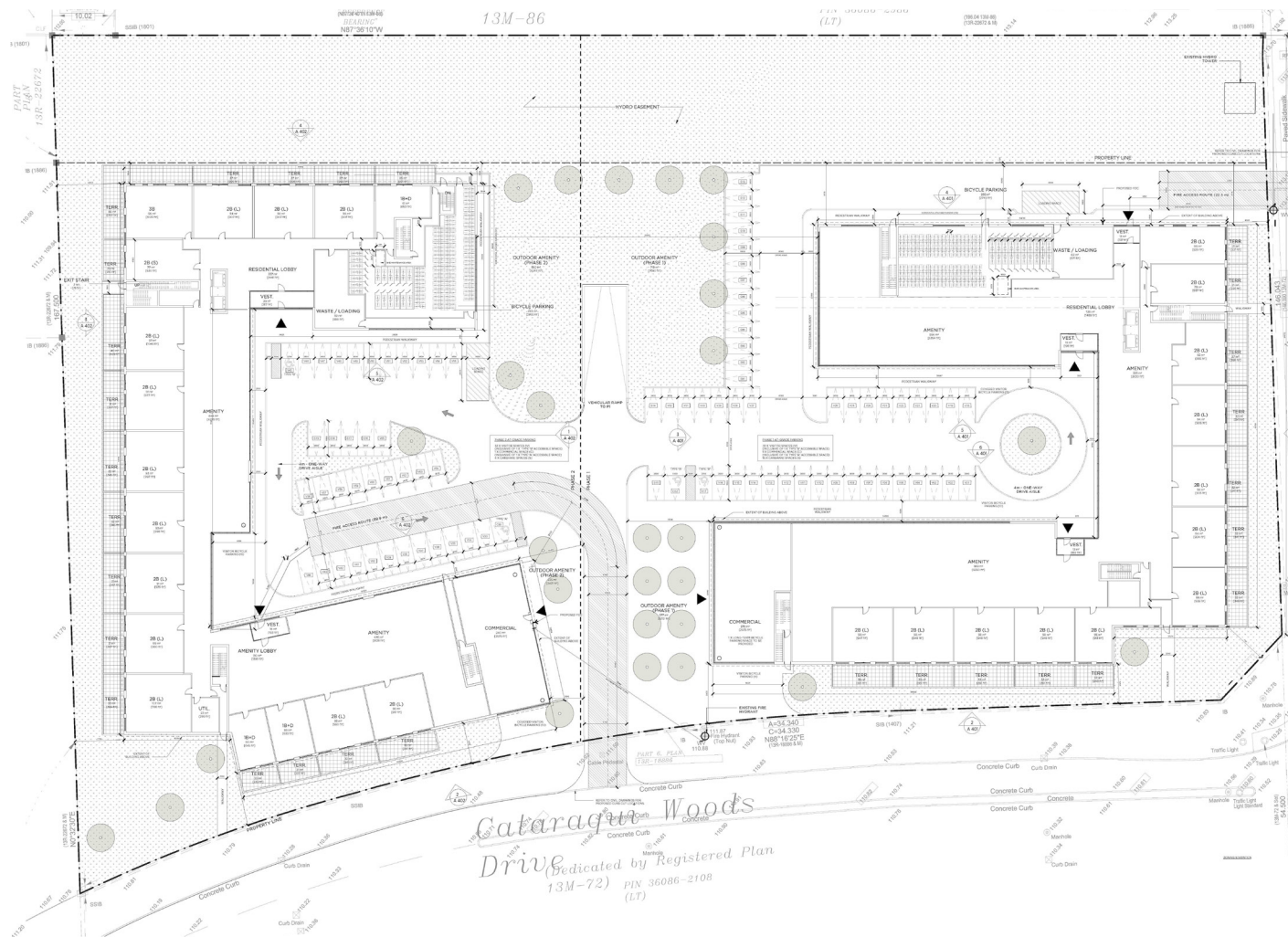
Address	500 Cataraqui Woods Dr, Kingston, ON	
Legal Description	Block 3, Plan 13M72; S/T Easement in favour of the Hydro-Electric Power Commission of Ontario as in TKU12483; S/T Easmt in favour of the Corporation of The City of Kingston over PT BLK 3, PL 13M72, PT 5, 13R18886 as in FC44284, S/T Easmt in favour of Hydro One Networks Inc. over PT BLK 3, PL 13M72, PT 5, 13R18886 as in FC47069 City of Kingston	
Seller	Centennial Land Development GP Inc.	
Land Area	± 5.344 acres (gross site area), ± 4.392 acres (net area)	
Frontage/Depth	± 605.25 ft along Cataraqui Woods Drive ± 311.13 ft along Centennial Drive	
Easement	(0.952 acres) Hydro One	
Official Plan	Residential Section 10C.3.34.1	"high density residential development may be located at the northwest corner of Centennial Drive and Cataraqui Woods Drive, subject to the following restrictions: a. The maximum density is 280 dwelling units per net hectare of land."
Zoning	URM2 - E142 & E143 - H231 (By-Law 2022-62)	
Permitted Density	497 units based on 280 dwelling units per net hectare	
Maximum Building Height	22 meters (6 storeys)	
2023 Final Property Taxes	\$44,408.63	
Site Services	Municipal water/sewer, natural gas, hydro Development approved subject to adequate servicing capacity achieved by way of the substantial completion of the Days Road Pumping Station upgrades or an acceptable alteration. This upgrade is near completion.	
Archaeological	Phase 1-2 Assessment completed November 1, 2023 stating "The subject property tested during Stage 2 excavation has been assessed and found to contain no significant archaeological resources. No future work is required with the study area."	
Environmental Status	Phase I ESA Update - Complete May 12, 2023* Phase II ESA Update - Complete June 2, 2023* *Prepared in accordance with O.Reg. 153/04, as amended, Records of Site Condition Part XV.1 of the Environment Protection Act. RSC filed in the Environmental Site Registration on November 22, 2023 (RSC No B-403-8242962467)	

Concept Elevations

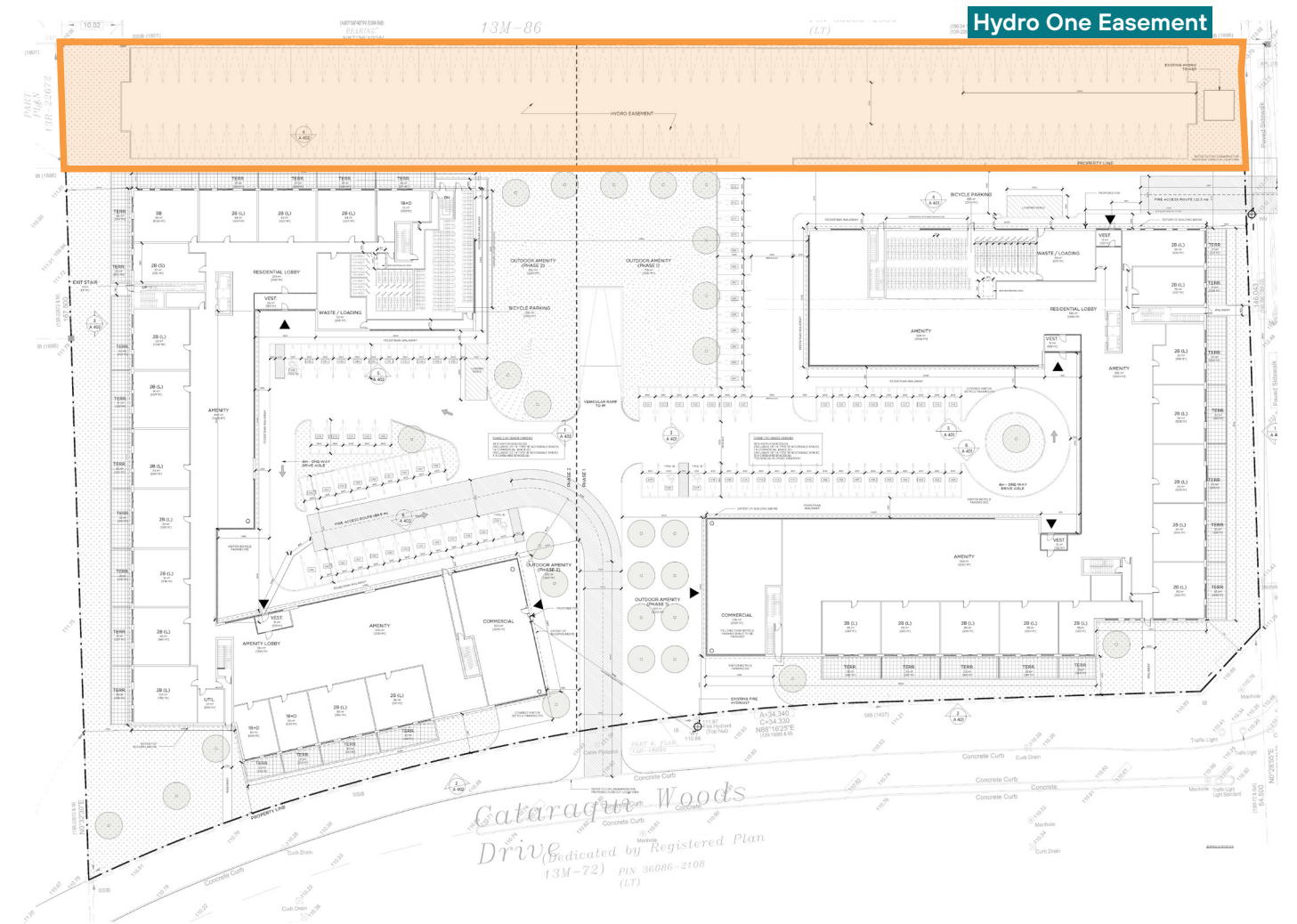


Site Plans & Statistics

Ground Floor Plan



Alternate Parking Plan

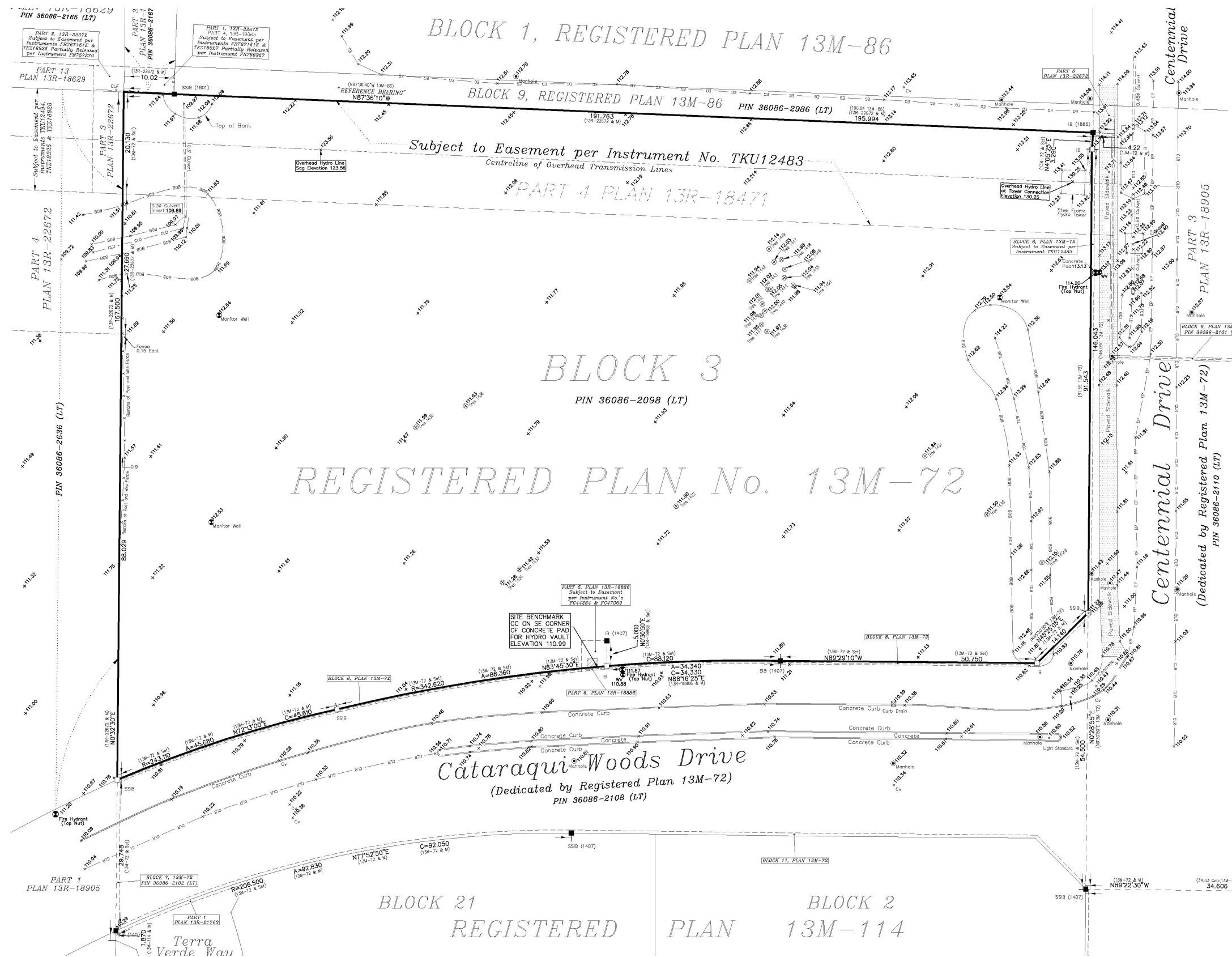


Gross Floor Area	± 410,191 sf based on Seller's current development concept				
Unit Mix	11 x bachelors	66 x 1 bedrooms	72 x 1 bedrooms + den	256 x 2 bedrooms	25 x 3 bedrooms
Unit Count	430				
Average Unit Size	± 783.42 sf				
Commercial GFA	± 5,564.94 sf				
Underground Parking	± 430 spaces				
Surface Parking	± 86 spaces				

The **Alternate Parking Plan** shown above utilizes the Hydro One easement (corridor) on the north end of the site to increase surface parking and reduce the size of the underground parkades to the footprints of the buildings and their respective interior courtyards.

Alternate Parking Plan	± 300 spaces
Surface Parking	± 216 spaces (130 located on Hydro easement)

Typographical Survey



Area Highlights

Location Overview

Situated on the northwest corner at the intersection of Centennial Drive and Cataraqi Woods Drive in the Cataraqi North neighbourhood, the development sits in Kingston's suburban West End – the fastest growing area of the City. Nestled at the crossroads of major transportation routes, Highway 401 and surrounded by developing residential communities, national retailers, and nearby parks, schools, and recreational facilities, this is a location lends to a well-rounded lifestyle that appeals to a broad range of residents including young professionals, families and retirees alike.

The property is located just over one kilometer from Princess Street and Kingston's largest retail corridor making local and national retailers, restaurants, and personal services highly accessible. Future residents can enjoy the convenience of the following stores and attractions all located within a two kilometer radius: Costco, Farm Boy, Loblaws, Canadian Tire, Lowes, Rona, Walmart, The Beer Store, LCBO, Tim Horton's, Starbucks, The Cataraqi Centre, The Invista Centre (four ice pads, fitness centre, outdoor turf and grass fields), and many others.

Kingston Demographics

132,485
Population



41
Median Age



2.2
Average Household Size



\$74,306
Average Household Income After Taxes



Cataraqi North Demographics

5,635
Population

46
Median Age

1,685
Total number of census families in private households

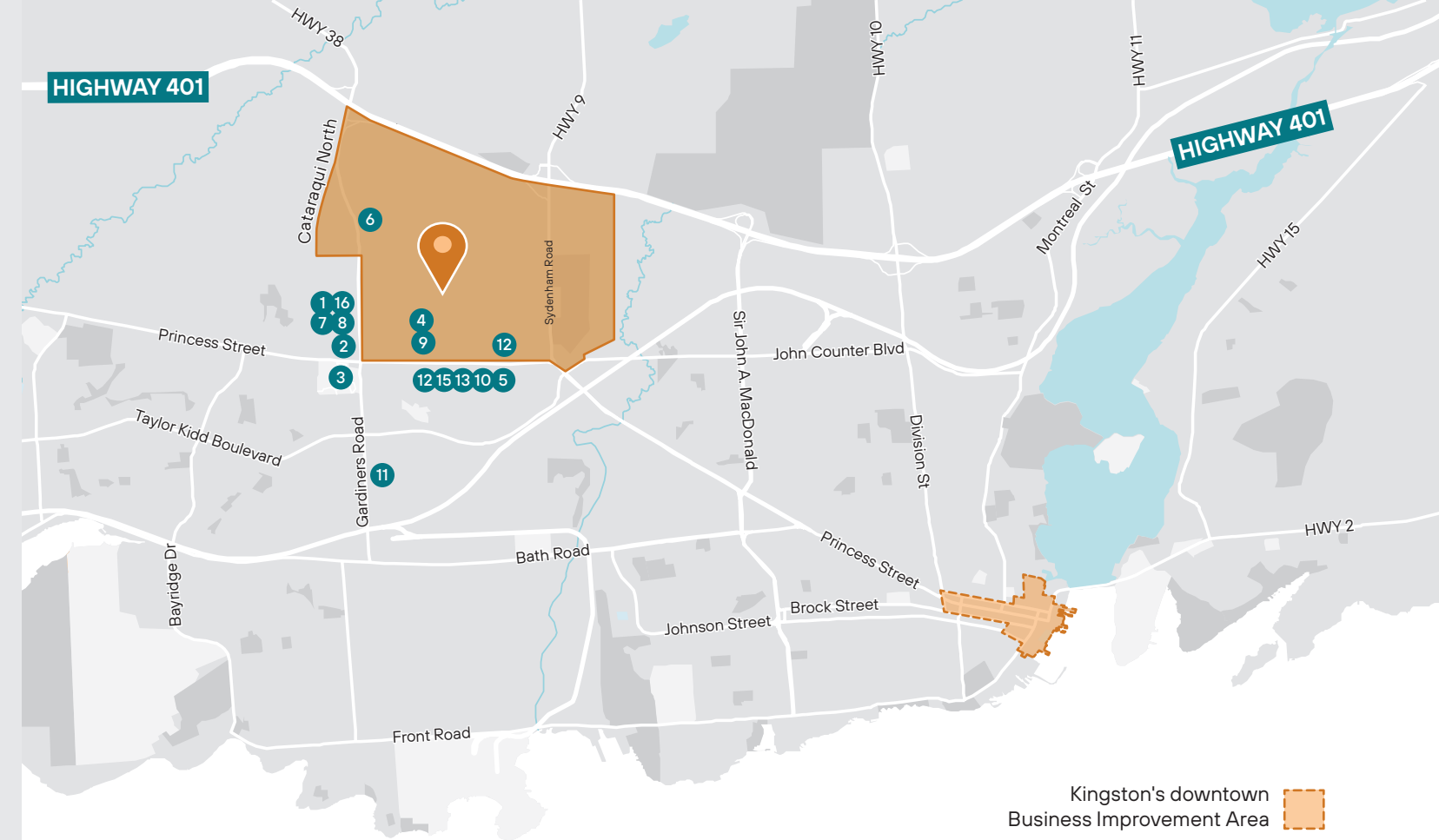
\$88,000
Median after-tax income of household in 2020

Source: Statistics Canada 2021 Census

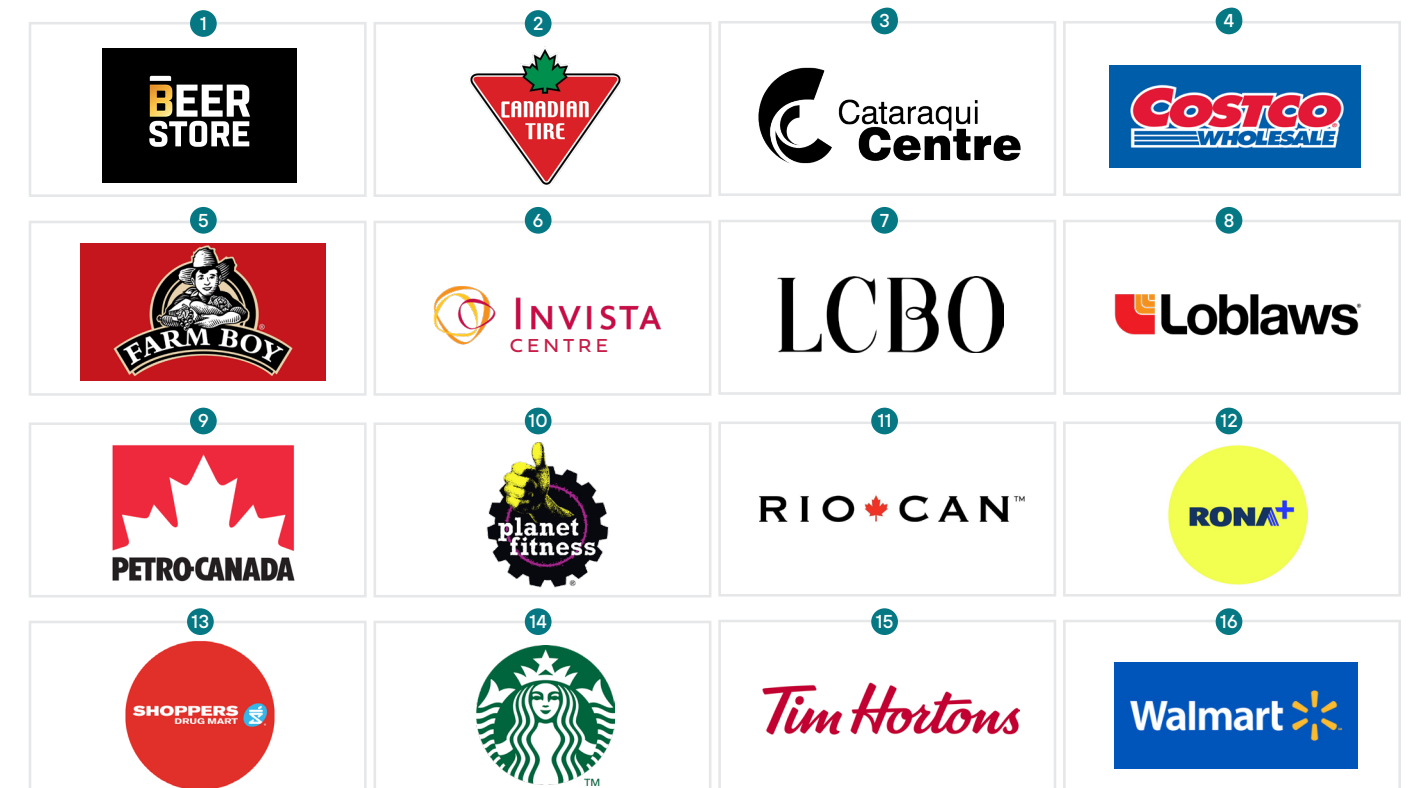
Distance By Vehicles



Montreal	2 hr 56 min	290 KM	-
Ottawa	1 hr 54 min	198 KM	-
Toronto	2 hr 34 min	254 KM	-
Downtown Kingston	18 min	9.3 KM	-
Queen's University	14 min	8.6 KM	85
St. Lawrence College	12 min	7.2 KM	49
Centennial Drive Bus Stop (Walk Time)	2 min	1.4 KM	65



Nearby Amenities



Offering Process

Rockwell Commercial (the "Broker") has been retained by the Seller to seek proposals for the disposition of 500 Cataraqui Woods Drive, Kingston, ON (the "Property"). Prospective buyers are invited to submit a Letter of Intent ("LOI") through the Broker for consideration by the Seller. LOIs will be conveyed to and evaluated by the Seller as they are received.

The Seller is under no obligation to respond to or accept any offer for the Property, and the Seller reserves the right to remove the Property from the market and to alter the process described above and timing thereof, at its sole discretion.

Asking Price

\$12,900,000.00

(Based on \$30,000 per Suite x 430 suites)

Broker's Data Room

Upon execution of the Seller's Non-Disclosure Agreement, the Listing Broker will provide instruction to qualified prospective buyers for access to the Broker's Data Room. The Data Room contains a comprehensive inventory of confidential due diligence documents and reports, including but not limited to:

- Official Plan and Zoning By-Law Amendments
- Topographic Plan of Survey – PDF & DWG
- Tree inventory Report and Map
- Traffic Impact Study
- 2023 Final Tax Bill & MPAC Notice of Assessment
- Noise Impact Study
- Hydro One Easement Documentation
- Geotechnical Report
- Phase I & II Environmental Site Assessments
- Record of Site Condition Filing
- Servicing Report
- Stormwater Management Report
- Conceptual Architectural Plans and Massing
- Stage 1-2 Archaeological Assessment
- Aerial Photography
- Standard form of Letter of Intent ("LOI")

All documents and information contained within the Data Room is provided by the Seller and Broker without any representation or warranty as to its accuracy, completeness, or relevance, and is provided for information purposes only. Buyer's shall rely on its own independent enquiries, inspections and testing.

500 Cataraqui Woods Dr.

Contact Information

Martin L. Skolnick
Vice President/Broker
+1 613 541-9865
martin.skolnick@rockwellcre.com

Scott Botting B.Com
Broker
+1 613 888-8664
scott.botting@rockwellcre.com



**Rockwell Commercial
Real Estate, Brokerage**
78 Brock St. Kingston, ON K7L 1R9
www.rockwellcre.com



Rockwell

COMMERCIAL



**Rockwell Commercial
Real Estate, Brokerage**

78 Brock St. Kingston, ON K7L 1R9

www.rockwellcre.com